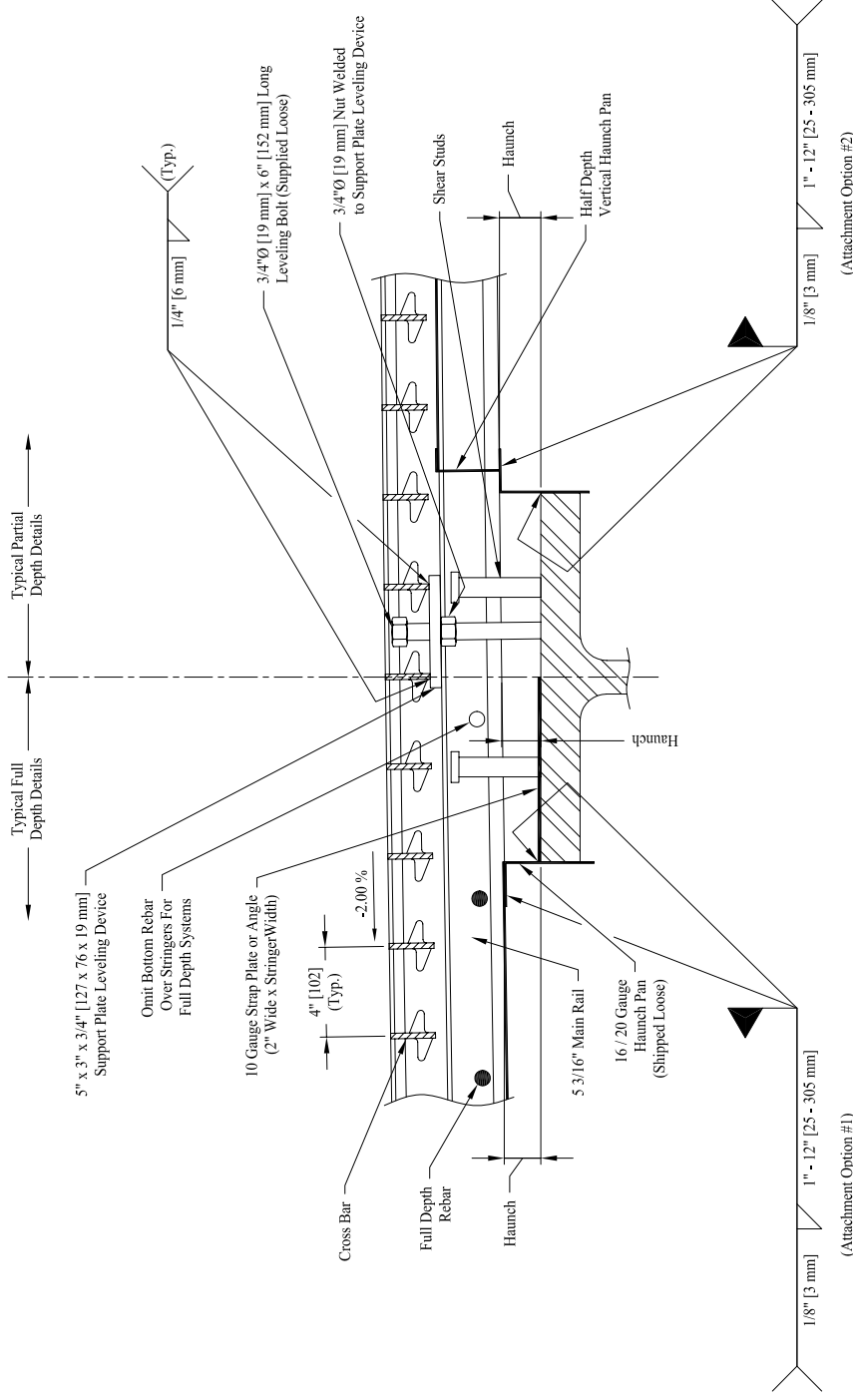


# REFERENCE DRAWING - Stringer Haunch Detail



Stringer Haunch Detail  
N.T.S.

- Notes:
1. Haunch Pans may be installed using Attachment Option #1 or #2 for either Full Depth or Partially Filled Systems.
  2. Form Pan, Haunch Pan and the Strap Plate thickness is exaggerated for clarity.
  3. Support Plate Leveling Devices may be used on both Partial Depth and Full Depth Systems.



FOR REFERENCE ONLY  
STRINGER HAUNCH DETAIL  
5-3/16" MAIN RAIL

VISIT US AT: <a href="http://www.idsi.org">www.idsi.org</a>	E-MAIL: <a href="mailto:info@idsi.org">info@idsi.org</a>	Ph. (412) 682-3041	Ex. (412) 682-3560
IDSi reserves the right to make minor design changes to this product in order to further its integrity and ease of fabrication			
DATE	BY	CHKD BY	DATE
A	JMO	JMO	09/03/2003
SCALE	NTS	DRAW NO.	REV
		D0104	0